



Oceanology Subsea Survey

Pipe Integrity Fault Detection



“Our design team is always inspired by challenging marine projects with an array of technologies and technical obstacles to overcome, this as an EN60945 certified product has tough environmental performance requirements for EMC, Thermal and Vibration which we achieved first time.”

**Engineering Manager,
Captec**

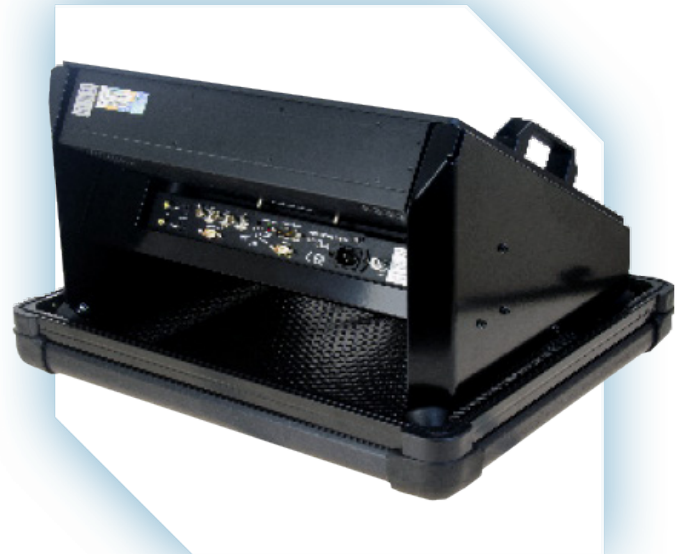
Our customer is a trusted supplier of equipment for a range of marine applications, including navigation, heading and motion measurement, and subsea survey. At the time of the project a longstanding relationship was already in place, and several successful computer hardware solutions for subsea survey had been supplied.

Requirements & Issues

- ▶ Deliver a technology refresh on a long-standing product due to suppliers ending production of the motherboard and several integral components
- ▶ Leverage the cost advantages of COTS components together with custom electronics hardware to provide a reliable system suitable for marine environments
- ▶ Retain a light-weight, rugged design ensuring portability and protection throughout transport and during marine operation
- ▶ Transportable and fully protected in an integral flight case, so the unit can be transferred efficiently and safely between vessels on a regular basis
- ▶ Functionality to allow stand-alone use, and the option of rack mounting for longer assignments

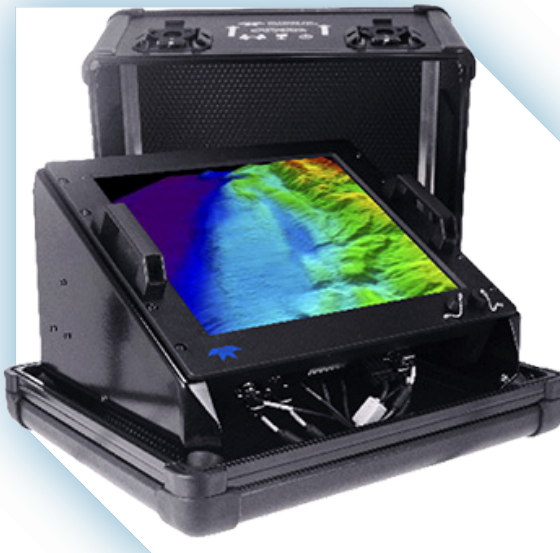
The Solution

- ▶ A COTS+ solution to drive down costs and increase supply chain reliability
- ▶ Panel computer integrated into a compact flight case for ease of transportation
- ▶ Engineered metalwork enclosure to retain a robust portable design and reduce overall weight
- ▶ Low power Intel Atom processor for increased reliability and minimal servicing
- ▶ VESA-mountable 19" Industrial PC that can also be integrated into a rack mount environment
- ▶ Integrated brackets and shock absorbers give integral impact and vibration protection
- ▶ Delivered fully functional and customer application ready with pre-installed and configured Windows 7 operating System
- ▶ Customised swappable I/O box VESA mounted to the panel computer to provide connectivity for sensors, video overlay and marine grade power supply



The Outcome

- ▶ 100+ Systems deployed to date on a wide range of vessels engaged in subsea survey and underwater asset inspection
- ▶ Front USB options for flexibility and ease of use
- ▶ Maximum longevity through careful component selection
- ▶ EN60945 marine equipment certified for EMC, thermal & vibration
- ▶ Durable flightcase for easy transportation, deployment and operation with minimal setup
- ▶ Custom branding to the customer's requirements



captec-group.com



[/company/captec](https://www.linkedin.com/company/captec)



[@captecgroupp](https://twitter.com/captecgroupp)

EMEA Office

7 Whittle Avenue, Fareham,
Hants, PO15 5SH, UK

- ▶ +44 (0)1489 866 066
- ▶ sales@uk.captec-group.com

North America Office

15 Saltsman Dr. Cambridge, ON.
N3H 4R7, Canada

- ▶ +1 (519) 650 4000
- ▶ sales@ca.captec-group.com