

E310 SERIES FANLESS COMPUTER

KEY BENEFITS

Powered by an Intel Celeron J1900 CPU for highly-efficient processing performance with low power consumption

Industrial motherboard design featuring a wide temperature range for demanding industrial applications

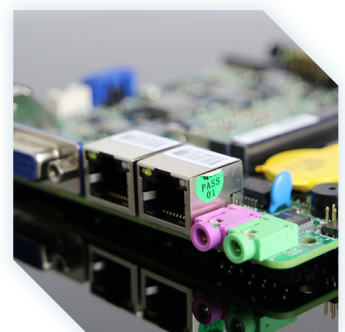
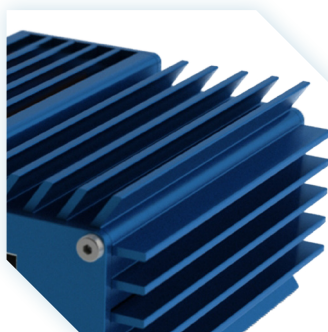
Optimised design with excellent thermal performance using its copper heat spreader to deliver leading reliability

Multiple custom I/O expansion options allow for application-specific configurations



The new E310 is a cost-effective industrial computer designed for 24/7 workloads. Featuring a highly-efficient, ultra-low power Intel Celeron J1900 processor and up to 16 configurable I/O ports, the E310 is suitable for a wide range of industrial applications where application-specific expansion is necessary.

The innovative heat sink design ensures excellent thermal performance for environments that require a high operational temperature.

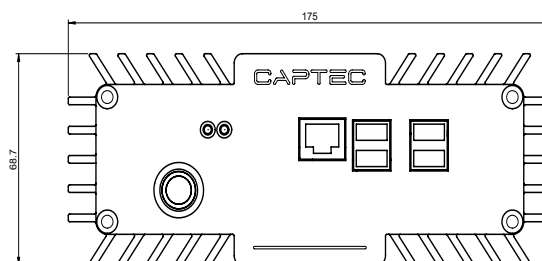
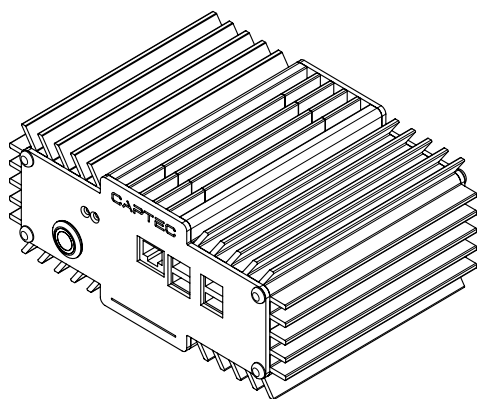


SPECIFICATIONS

E310 Series	Fanless Computer
Network	2 x gigabit LAN
CPU	Intel Celeron J1900 (4 Core, 2.0GHz base, 2.4GHz burst, 10W)
Memory	Up to 8GB
Storage	1 x SATA DOM 1 x mSATA
Storage Options	Up to 128GB SATA DOM Up to 512GB mSATA SSD
Graphics	1 x HDMI 1 x VGA
USB	1 x USB 2.0 1 x USB 3.0
Audio	1 x line out 1 x line in
Power Supply	12V DC input
Dimensions	175mm x 121mm x 65mm (WxDxH)
Weight	< 1.2Kg
Operating Temp	-10°C to 50°C
Mounting	VESA/DIN rail
Ordering Codes	EC-211-31B – E310, J1900 barebone

E310 Series	Fanless Computer
Expansion Options	CANbus 2 x isolated CANbus 2.0B/J1939
	Network 1 x GbE LAN 1 x isolated GbE LAN 2 x isolated GbE LAN 2 x isolated PoE GbE LAN 2 x isolated PoE+ GbE LAN 3G/4G/WiFi capable
	Serial 2 x RS232 4 x RS232 8 x RS232 4 x RS232/422/485 2 x isolated RS422/485 4 x isolated RS485
	GPIO 32Bit digital I/O
	USB 2 x USB 3.0 4 x USB 3.0
Certification	CE, RoHS, FCC, NRTL

TECHNICAL SPECIFICATIONS



E&OE. Captec reserves the right to change specifications without notice.

CAPTEC

EMEA Office
7 Whittle Avenue, Fareham
Hants, PO15 5SH, UK

T: +44 (0)1489 866 066
F: +44 (0)1489 866 088
E: sales@uk.captec-group.com

[/company/captec](https://www.captec-group.com)

www.captec-group.com

North America Office
15 Saltzman Dr. Cambridge,
ON. N3H 4R7, Canada

T: +1 (519)650-4000
F: +1 (519)650-2000
E: sales@ca.captec-group.com

[@Captecgroup](https://twitter.com/Captecgroup)



191105-01 © Captec Ltd. 2019 All rights reserved - All products and company names listed are trademarks or trade names of their respective companies

