



# Commercial Shipping

## Rackmount Dual Marine EMI Filter



“The Captec designed rack mountable EMI filter box provided a tailored solution for Dell XR2 to meet DNVGLCG-0339 and IEC 60945 standards and be design ready for marine compliance as requested by the customer”

**Peter Drake, Business Development Director**

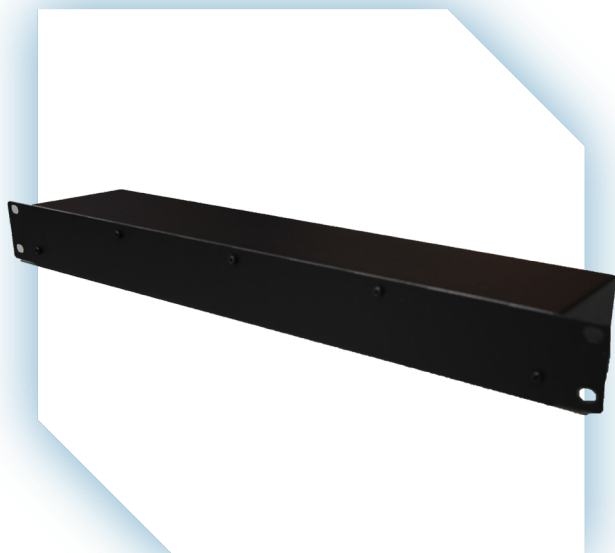
Our customer is a leader in global mobile satellite communications, continually developing and delivering innovative services and solutions to their customers.

### Requirements & Issues

- Commissioned to adapt partner’s Intel XEON enterprise server computers to be marine compliant to be supplied on board commercial ships
- The product must enable the customer to use commercial off-the-shelf equipment in the marine environment, by filtering out any noise from emergency communication bands
- The external filter boxes are rack mountable with a dual power supply to support a redundant power supply to the device and help prevent system damage
- No commercial off the shelf solution was available so a bespoke design was required

## The Solution

- The filter boxes are designed to support the EMI compliance testing and certification of commercial grade IT equipment, from workstations to enterprise-grade server products in marine applications
- Captec engineers developed and produced the filter boxes, limiting common and differential-mode EMI emissions from equipment and integrating EMI filters to provide clean power and incorporated dual power/rackmount form factor
- Using our metalwork and electro-mechanical capabilities, Captec designed this product for high reliability and low maintenance



## The Outcome

- Captec produced an external filter box, rack mountable with successful compliance for marine use and designed to meet DNVGL-CG-0339 and IEC60945 standards
- New Captec filter product brought to market, extending Captec's marine product portfolio
- All work was undertaken by Captec, from design through to test and production, with over 10,000 units supplied to date through worldwide distribution



[captec-group.com](http://captec-group.com)



[/company/captec](https://www.linkedin.com/company/captec)



[@captecgroupp](https://twitter.com/captecgroupp)

### EMEA Office

7 Whittle Avenue, Fareham,  
Hants, PO15 5SH, UK

- +44 (0)1489 866 066
- [sales@uk.captec-group.com](mailto:sales@uk.captec-group.com)

### North America Office

15 Saltsman Dr. Cambridge, ON.  
N3H 4R7, Canada

- +1 (519) 650 4000
- [sales@ca.captec-group.com](mailto:sales@ca.captec-group.com)